



## Trane Rental Services

Cooling and heating are services, not products. A process or a building does not need a chiller or a boiler sitting on a roof, but a reliable and efficiency supply of cold or hot water, cold or warm air. This is the essence of what we do at Trane Rental Services. Let us take care of it for you.



TRANE  
TECHNOLOGIES

## Rental needs

More than you can imagine



Emergency and backup cooling? Yes, but that's not all. A Rental unit offers the highest flexibility at the lowest risk for the customer. All kinds of needs can be met with these two universal benefits. The only limit is our imagination.

**You need cooling or heating, the rest is on us.**

Trane Rental Services deliver cooling and heating. We always start by assessing your needs and defining the best solution to meet your specific requirements. You do not need a chiller or a boiler, you need cooling or heating delivered in the most reliable and efficient way.

**From a single-day event to a long-term industrial application**

Our Rental Services teams are trained and prepared to respond to all kinds of needs. Our services range from simple equipment delivery to the complete management and implementation of complex projects with multiple units and accessories. You can count on Trane.

## Emergency Hire Support

The fastest way to restore cooling or heating supply

**A solution for any cooling or heating needs. As quick as you need it.**



### Modern, efficient and wide-ranging fleet

We leverage our wide Trane product portfolio and add brand-new units every year, delivering Trane quality, reliability and innovation. From 10 kW to 2 MW, we have all you need.



### Capillary presence in the territory

We constantly optimise our fleet footprint and logistics to reduce delivery and commissioning times.



### Trane reliability, efficiency and service coverage

All our equipment is perfectly maintained according to the highest standards. Our customers can count on our extensive network of service engineers for outstanding 24/7 support. It's all included.

## Capacity Extension and Seasonal Needs

Cooling and heating that adjusts to your needs, when you need it

**The best way to deal with changing load and seasonal demand**



### **No compromise on comfort and quality of your building or process**

A Trane Rental solution is the right size to meet peak demand and ensures that cooling or heating temperature setpoints are maintained for the best quality and yield of your production or for the comfort and satisfaction of people.



### **Minimise financial risk by optimal use of capital and cash**

Operations nowadays are frequently scaled up or down at a much faster speed than before. A Rental solution eliminates costs when cooling or heating is not needed, while capacity can be quickly ramped up when production volumes or demand increases. From fixed costs to variable costs.



### **Trane reliability, efficiency and service coverage**

All our equipment is perfectly maintained according to the highest standards. Our customers can count on our extensive network of service engineers for outstanding 24/7 support.



### **Capacity expansion on demand**

When the existing HVAC plant capacity cannot cope with demand due to exceptionally high or low ambient temperatures or a surge in production volume or building occupancy, a Rental solution can solve the problem and restore the right cooling or heating performance.

Typical applications: Healthcare, Industry, Hospitality, Commercial buildings, Warehouse



### **Capacity expansion by design**

A traditional approach of sizing the HVAC plant capacity for the peak is generally a waste, as assets are not utilized for a large part of the year. A smarter and more modern approach is to invest in HVAC plant capacity for the base load and leverage the flexibility of a Rental solution for peak load management.

Typical applications: Industry, Warehouses, Commercial buildings



## Seasonal needs

Some businesses are intrinsically seasonal and require cooling or heating for a very short time. A Rental solution provides all the flexibility and agility required to make these businesses profitable, with a “pay as you go” model.

Typical applications: Ice rinks, Wine making, Agriculture

## Fast-track projects and planned maintenance

Cooling and heating backup when you need it

### The solution to your mission impossible



#### No compromise on the comfort and quality of your building or process

Trane engineers will assess the needs and define the best solution for your building or process demand, ensuring that cooling or heating temperature setpoints are maintained for the best quality and yield of your production or for the comfort and satisfaction of people.



#### Fast delivery and smooth commissioning

Our readily available, reliable and wide-ranging fleet of Rental chillers, rooftops and heat pumps is the best option when fast delivery and smooth commissioning of cooling or heating is required.



#### Trane reliability, efficiency and service coverage

All our equipment is perfectly maintained according to the highest standards. Our customers can also count on our extensive network of Service Engineers for the best 24/7 support. It's all included.

## Events

### Cooling and heating go on tour

#### Cooling and heating solutions you can trust



#### Performance of the highest standard

Trane engineers will assess the needs and define the best solution for your event, ensuring that cooling or heating temperature setpoints are maintained to deliver the best personal comfort and satisfaction.



#### Project planning according to your schedule

Event schedules may be tight and time is money. Trane partners with you to comply with your schedule and avoid any loss of time or money. Fast, reliable logistics and smooth commissioning of cooling or heating are second nature to us.



#### Trane reliability, efficiency and service coverage

All our equipment is perfectly maintained according to the highest standards. Our customers can count on our extensive network of service engineers for outstanding 24/7 support. It's all included

## Contingency planning

**Be prepared when the unexpected happens**

**The best way to secure heating and cooling**



### **Fastest reaction time to restore cooling or heating supply**

Temporary cooling and heating is always available when customer equipment is down. With our wide range of rental equipment, we are prepared to deliver the required cooling and heating as planned.



### **No surprises**

Trane engineers will assess the cooling or heating plant. They will work with you to define the equipment required, the correct positioning and the preparation work to be implemented on site. When activated, the plan can rapidly transform the equipment you need into a smoothly functioning system. Nothing is left to chance.



### **Trane reliability, efficiency and service coverage**

All our equipment is perfectly maintained according to the highest standards. Our customers can count on our extensive network of service engineers for outstanding 24/7 support. It's all included.

## Pest control

The safest and most effective way to get rid of insect pests

Cooling and Heating solutions for quick and efficient pest eradication



### Non-hazardous eradication of infestations

A mechanical approach to pest control, using freezing or heating, is more efficient and environmentally friendly than traditional chemical treatments. All surfaces are treated at once without using harmful chemical products, allowing people to use the premises immediately after treatment.



### Radical insect pest treatment with two destruction systems

Mechanical pest control is achieved by reaching the insects thermal death point through cooling or heating. Cold and heat can kill pests that have lodged in all materials and furnishings. Freezing is performed by taking infested items to cold containers. Heating kills pests by desiccation directly in your premises.



### Trane reliability, efficiency and service coverage

All our equipment is perfectly maintained according to the highest standards. Our customers can count on our extensive network of service engineers for outstanding 24/7 support. It's all included.

## Rental applications: cooling, heating or both?

Trane's complete offering for cooling and heating needs



A wide-ranging, modern, perfectly maintained fleet of Trane chillers, heat pumps and rooftops supported by a full range of ancillary items. These are the building blocks to create the perfect solution for your HVAC needs.

**A comprehensive and risk-free solution built on a modern, efficient and wide-ranging fleet.**

Our Rental engineers will understand your needs and configure the best solution from our flexible, modern, efficient and reliable Trane fleet. Thanks to their expertise and commitment, each project is executed in the safest, fastest and most professional manner.

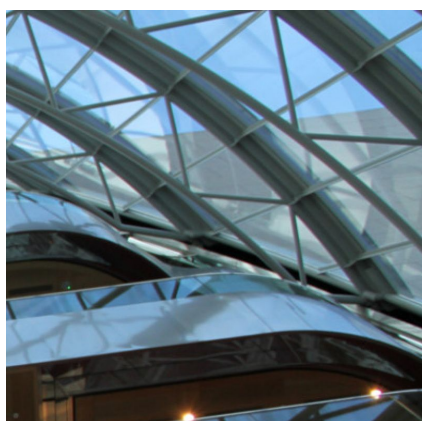
### **Constantly evolving**

The Trane Rental fleet features the latest Trane chillers, heat pumps and rooftops, equipped with quick connections for air, water and electricity. Rental units have crash frames for better protection and handling.

## Cooling delivered – promptly, efficiently, reliably

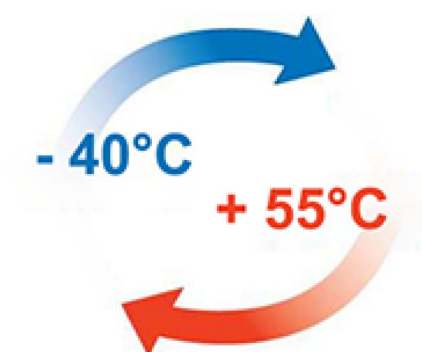
### Cooling Hire

#### Cooling solutions for all applications and needs



#### Cooling capacity from 5 kW to 2 MW in a single piece

We can deal with the smallest to the biggest need. When a single piece of equipment cannot reach the desired capacity or does not suit the space or application constraints, we set up a temporary plant with multiple units.



#### Wide temperature range

Our fleet can operate from -20°C to +80°C ambient temperature and deliver cold water and brine between -12°C and +25°C. Special units can go down to -40°C for the most demanding applications.



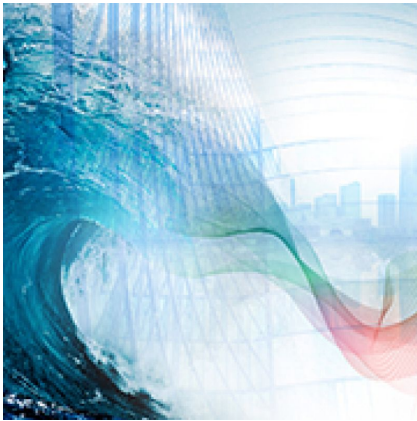
#### Trane reliability, efficiency and service coverage

All our equipment is perfectly maintained according to the highest standards and our customers can count on our extensive network of service engineers for outstanding 24/7 support.

## Heating delivered – sustainably, promptly, safely

### Heating hire

#### Heating solutions for all applications and needs



##### **Renewable and sustainable heating**

Heat pump technology uses renewable energy from the air, from water or from the ground. For 1 kW of electricity, our heat pumps and rooftops deliver at least 3 kW of heating. On a boiler or traditional heater, for every 1 kW burned you get less than 1 kW of useful heat.



##### **Safe and environmentally friendly**

Our heat pumps and rooftops do not use any fossil fuel – all they need is electricity to operate. So no expensive and risky management of fuel, and no local emissions or pollution.



##### **Trane reliability, efficiency, and service coverage**

All our equipment is perfectly maintained according to the highest standards and our customers can count on our extensive network of service engineers for outstanding 24/7 support.

## Cold Storage

Temperature controlled storage and warehousing solutions



Trane offers cold storage solutions with extensive applications in short-term to long-term storage, warehousing and testing. Our solutions can be adapted to perfectly meet your needs with options including telematics, remote monitoring and Controlled Atmosphere.



## Cold Storage

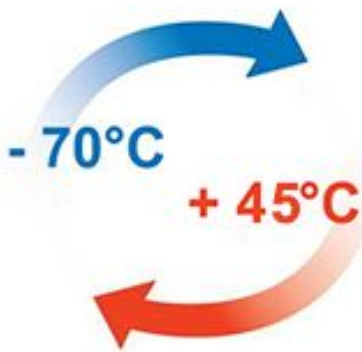
Temperature controlled storage and warehousing solutions

**Low to ultra-low temperature capability**



**Easy to use and easy to service**

Simple design and most advanced controller in the industry



**Precise temperature control from 45°C to -70°C**

Our ISO containers are available in sizes 10', 20' and 40'. With unitary containerized cold storage, you can reach -70°C.



**Trane reliability, efficiency and service coverage**

All our equipment is perfectly maintained according to the highest standards. You can have a fully electric operation, with optional diesel generator back-up and real-time remote monitoring, 24/7 in option.



## Unitary cold storage solutions

Low to ultra low temperature solutions ranging from  $-70^{\circ}\text{C}$  to  $+45^{\circ}\text{C}$ :

- Available in ISO containers sizes 10', 20' and 40'
- Precise temperature control
- Fully electric operation, with optional diesel generator back-up
- Factory fitted telematics: Real-time remote monitoring, 24/7 (option)
- Easy to use/easy to service: Simple design and most advanced controller in the industry



## Applied low temperature solutions

Low temperature systems for all building sizes and types from  $-20^{\circ}\text{C}$  to  $+40^{\circ}\text{C}$ :

- Air handling units + chiller / boiler/ heat pump: from  $+30^{\circ}\text{C}$  to  $0^{\circ}\text{C}$ .
- Low temperature and very low temperature fancoils: from  $+2^{\circ}\text{C}$  to  $-10^{\circ}\text{C}$ .
- Low temperature fancoils + chiller/ heat pump: from  $-10^{\circ}\text{C}$  to  $-20^{\circ}\text{C}$ .

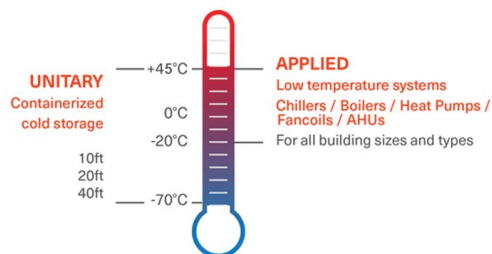


## A large range of applications

- Any raw material or finished product requiring temperature controlled storage to preserve or increase shelf life.
- R&D applications where a temperature controlled environment is required to enable Accelerated Life Testing (ALT) of critical components.
- Mechanical treatment for disinsectization of insects, parasites and pests.

## Our unitary and applied solutions can fit all industries

- Food and Beverage, manufacturing sites
- Warehouses
- R&D material and high-tech components
- Pharmaceuticals, Bio-life, Healthcare
- Festivals/ events/exhibition centers
- Supermarkets



## **Rental sharing and circular economy**

### **A step towards sustainability**



Selecting a rental solution is a responsible choice to promote a more sustainable approach to HVAC. The flexibility of the EaaS business model is the key to rethinking our approach to HVAC and making a big step towards more sustainable cooling and heating.

### **Reduce energy intensity and consumption of natural resources**

There are plenty of real-life HVAC applications where a rental solution can help reduce the carbon footprint or energy intensity, either by sharing equipment or by always running the most recent machine, at the cutting edge of technology.

### **The advantages of EaaS – Equipment as a Service**

The flexibility of the EaaS model builds agility and resilience into your business.

### **Sharing equipment is caring for our planet**

## EaaS Sharing

**Sharing is caring for our planet**

### Partnering for the next level in sustainability



#### **Cut consumption of natural resources by 50%**

When two or more customers share the same piece of equipment, we eliminate the need to build an extra unit, thus reducing the consumption of copper, aluminium, steel and energy. Wasting is a choice, not a need.



#### **As good as owning your own equipment**

Trane Rental Services will deal with all logistics, commissioning and maintenance aspects to deliver the same – or better – service level compared to a traditional ownership model. If you notice a difference, it will only be positive. You need cooling or heating, not a chiller or a heater.



#### **Trane reliability, efficiency and service coverage**

All our rental equipment is perfectly maintained according to the highest standards. Our customers can count on our extensive network of service engineers for outstanding 24/7 support. It's all included.

## EaaS Upgrade

**Keep upgrading to the highest efficiency level**

### Partnering to reduce energy intensity



#### **Stay on the cutting edge of technology**

With EaaS, you are entitled to replace your equipment with a more efficient unit every five years. This means at a much faster pace than a typical ownership model would allow. At Trane, we have managed to double our chiller efficiency in the last five years, offering customers a massive opportunity for savings.



#### **Your uninterrupted cooling and heating supply**

With EaaS, we take all the risk and you get all the services. In case of failure, Trane Rental Services will restore cooling and heating supply as quickly as possible, meeting the most ambitious service level, either by repairing or replacing the unit.



#### **Trane reliability, efficiency and service coverage**

All our rental equipment is perfectly maintained according to the highest standards. Our customers can count on our extensive network of service engineers for outstanding 24/7 support. It's all included.

## Hire equipment selection

Trane's complete offering for hire cooling and heating needs



### Constantly evolving

The Trane Rental fleet features the latest Trane chillers, heat pumps and rooftops, equipped with quick connections for air, water and electricity. Rental units have crash frames for better protection and handling.

### A comprehensive and risk-free solution built on a modern, efficient and wide-ranging fleet.

Our Rental engineers will understand your needs and configure the best solution from our flexible, modern, efficient and reliable Trane fleet. Thanks to their expertise and commitment, each project is executed in the safest, fastest and most professional manner.

### You need cooling or heating, the rest is on us.

Through our Rental Services, we deliver cooling and heating. We always start by identifying your needs and we tailor each solution specifically to meet your requirements. You do not need a chiller or a boiler, you need cooling or heating, delivered in the most reliable and efficient way.

A wide-ranging, modern, perfectly maintained fleet of Trane chillers, heat pumps and rooftops supported by a full range of ancillary items. These are the building blocks to create the perfect solution for your HVAC needs.

## **Rental Vertical Markets**

**A solution for everything and everyone**



Fast response, flexibility, risk minimisation, financial optimisation, sustainability: all customers value one or more of the advantages offered by a Trane Rental Services solution. There is always a good reason.

### **Our knowledge and expertise applied to your business**

Even though Rental is for everyone, not all customers and applications are made the same. Our highly trained engineers are experienced in all kinds of scenarios: a successful project always starts from a good understanding of what the customer needs.

### **A wide-ranging, modern, perfectly maintained fleet of Trane chillers, heat pumps and rooftops supported by a full range of ancillary items**

Our Rental engineers will understand your needs and configure the best solution based on our versatile, modern, efficient and reliable Trane fleet. Thanks to their expertise and commitment, the project is executed in the safest, fastest and most professional manner.

### **Cooling or heating services, the rest is on us.**

Through our Rental Services, we deliver cooling and heating. You do not need a chiller or a boiler, you need cooling or heating delivered in the most reliable and efficient way, depending on your industry or application.

## Improve Operations

Technology is continuously evolving and Trane Engineering is ahead of the curve in bringing innovation into product development. Our sustainable solutions deliver enhancements to the Trane installed base to make your chillers and heat pumps even "better than before". That's Trane Building Advantage - TBA.

## Trane Rental Services

Cooling and heating are services, not products. A process or a building does not need a chiller or a boiler sitting on a roof, but a reliable and efficiency supply of cold or hot water, cold or warm air. This is the essence of what we do at Trane Rental Services. Let us take care of it for you.



<https://trane.eu/rental>



Trane – by Trane Technologies (NYSE: TT), a global climate innovator – creates comfortable, energy efficient indoor environments through a broad portfolio of heating, ventilating and air conditioning systems and controls, services, parts and supply. For more information, please visit [trane.eu](https://trane.eu) or [tranetechnologies.com](https://tranetechnologies.com).